

PRACTICAL. IMPRESSIVE. PERFECT.

570

BROAD

Property Features

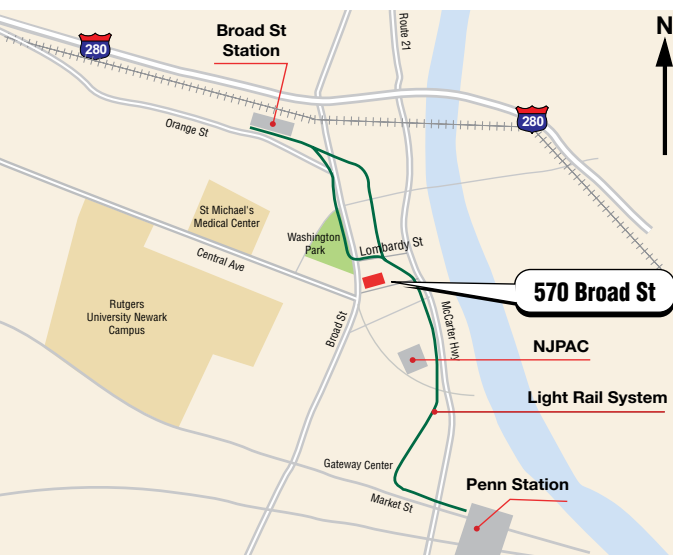
15-story office building in Newark's central business district:

- Responsive, on-site property management
- 24/7 access
- 24-hour security
- 200,000 square feet of rentable space
- Prestigious renovations underway
- Wired for voice, data and video technology
- Signage opportunities
- 15,000-square-foot floor plates
- Tenant build-outs to suit your needs
- Four new computerized elevators
- New lobby, exterior and restrooms
- New three-phase 480/277-volt electric backbone

Excellent transportation access:

- Walking distance to Penn Station and Broad Street Station
- Just minutes from Newark Airport and Manhattan
- Extensive bus and train lines to and from Hoboken, Princeton, Trenton and New York City
- Loop Bus service to and from Penn Station
- New Light Rail System under construction
- Nearby surface/garage parking
- Easy access to NJ Turnpike; Garden State Parkway; I-78; and routes 1 & 9, 21 and 22
- Walking distance to NJPAC, Prudential Center

Light Rail System connects Penn Station and Broad Street Station



Major landmarks surrounding 570 Broad Street



570 Broad Street. The smart business choice.

Dramatically modernized office space with the latest technology and modern business conveniences

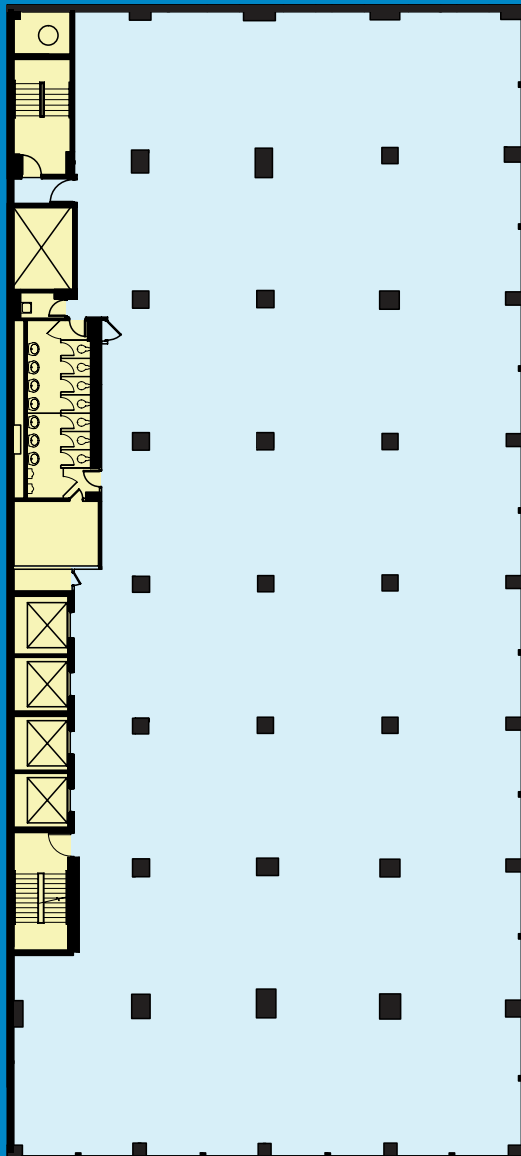
State-of-the-art high-speed elevators, security system, occupant safety systems and high-speed fiber optic communications

Extensive renovations completed

- New lobby
- New elevators
- New exterior
- New bathrooms
- New HVAC
- New occupant safety systems

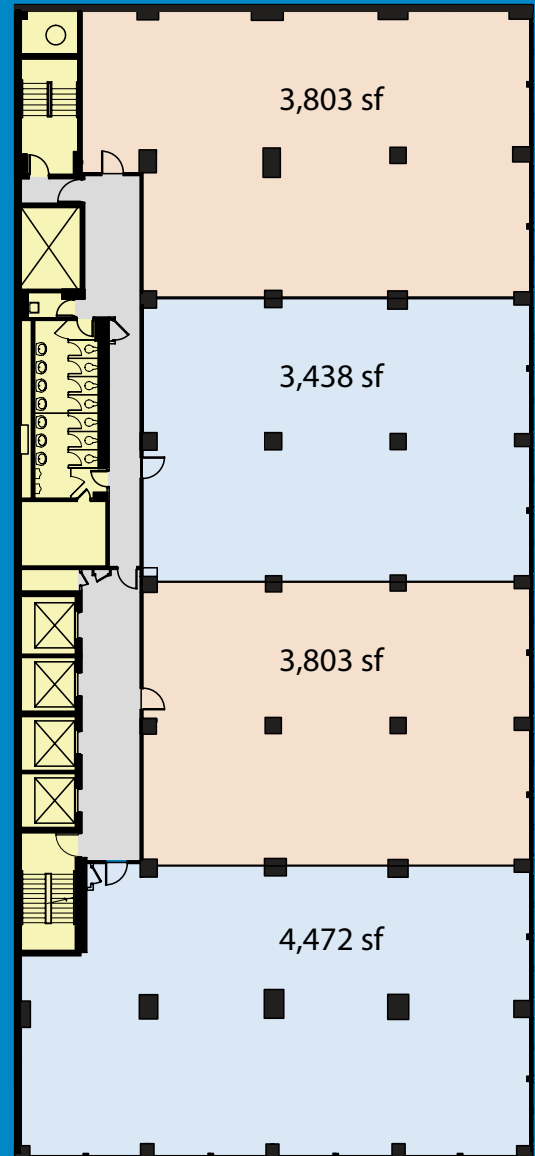
Rentable Area: 200,000 sf • Typical Floor Size: 15,000 sf

New York City View



Broad Street

Multi-tenantable Floor Plan



Visit us at: www.570broad.com



In the heart of Newark's central business district, 570 Broad is 15 stories of ideal space. The location is not only accessible, it's just steps from countless popular business and cultural destinations. Discover how major improvements make the rebirth of 570 Broad the perfect home for your organization.

Visit us at: www.570broad.com

For a private viewing contact:

Brendan Berger, VP Leasing:
973-623-3300 • brendan@bergerorg.com

Josh Wertentheil, Building Manager:
973-596-0570 • jwertentheil@bergerorg.com



Berger Organization
www.bergerorg.com